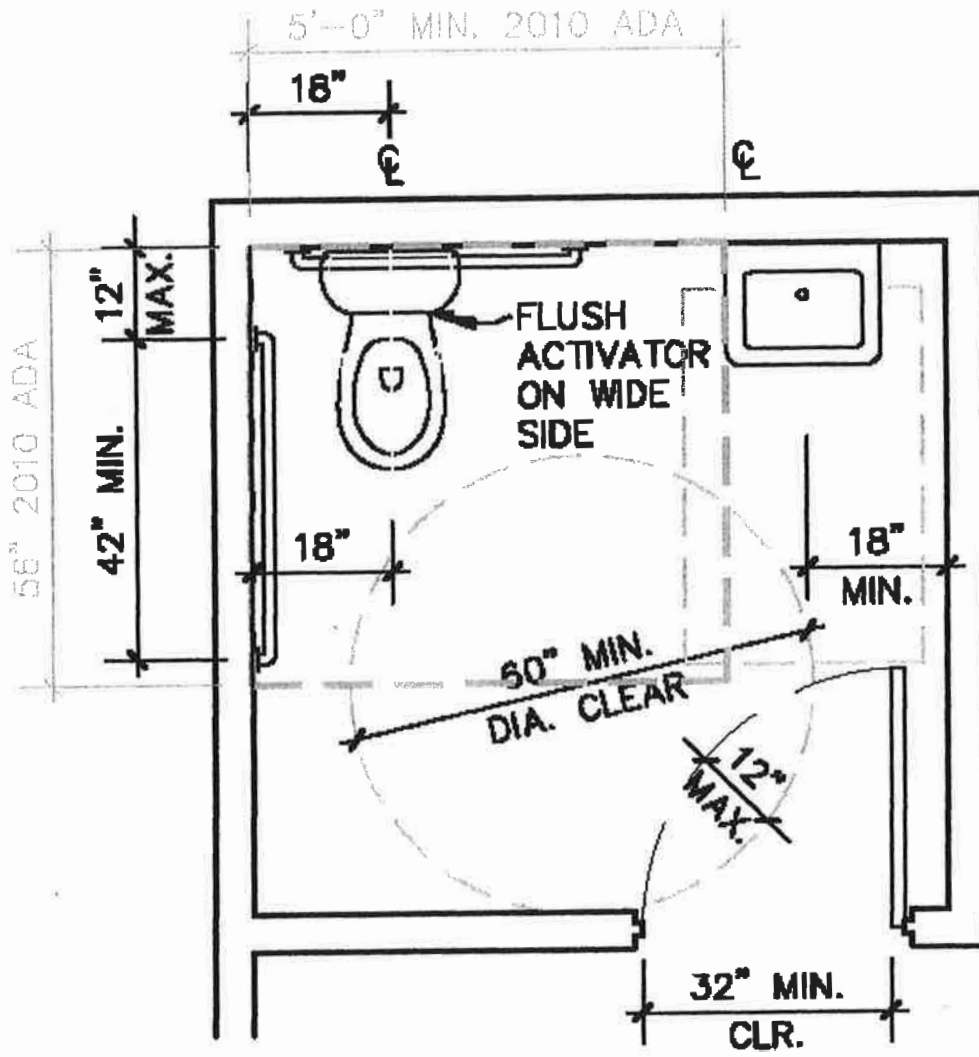
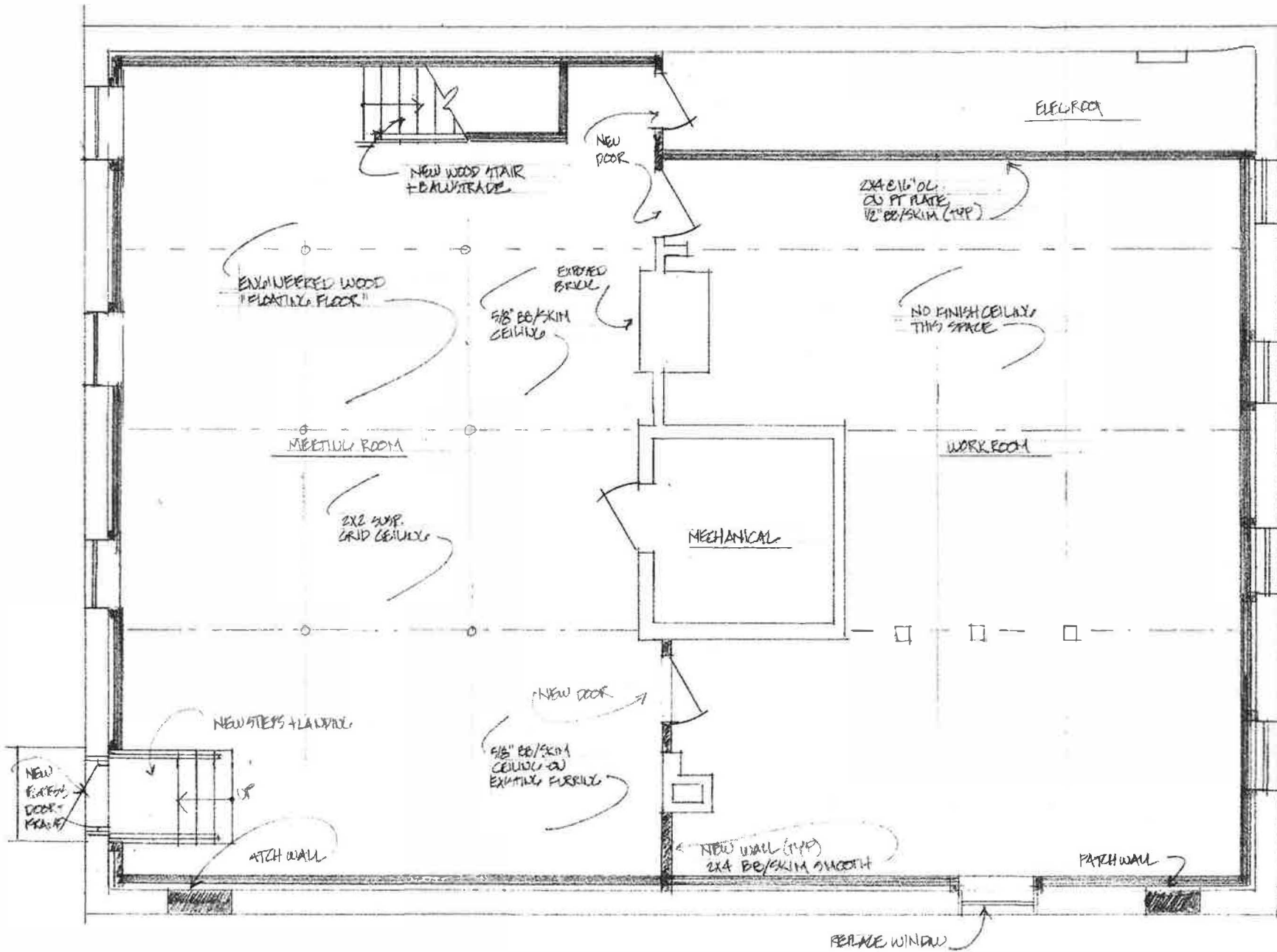


MAGNOLIA SCHOOL HOUSE
 FIRST FLOOR PLAN PROPOSED
 1/4" = 1'-0" 2 NOV 2017





REPLACE 4 FRONT
WINDOWS W/ FIXED
SASH W/ OSCURED
TEMPERED GLASS

MAGNOLIA SCHOOL HOUSE
BASEMENT PLAN - PROPOSED
1/4" = 1'-0" 2 NOV. 2015